



www.jrlgroup.co.uk



•JRL
J.REDDINGTON

•MP
MILLER PILING

•JRL
MIDGARD

•JRL
UK FACADES LTD

•JRL
LONDON TOWER CRANES

•JRL
LONDON CONCRETE PUMPING



Contents

| | |
|-------------------------|-------|
| JRL GROUP INTRODUCTION | 03 |
| PLAN SAFE, WORK SAFE | 05 |
| J.REDDINGTON | 07-13 |
| TRENT PRECAST | 15 |
| MILLER PILING | 17 |
| MIDGARD | 19 |
| UK FACADES | 21 |
| LONDON TOWER CRANES | 23 |
| THAMES REINFORCEMENTS | 25 |
| STAIR MASTER | 26 |
| YELLOW MAT | 27 |
| LONDON CONCRETE PUMPING | 28 |



ONE REDROW
WWW.ONECOMMERCIALSTREET.COM

ONE REDROW
WWW.ONECOMMERCIALSTREET.COM

ibis HOTEL

JRL
GROUP



Introduction

Over two decades the JRL Group has grown from a company specialising in sub and superstructure packages to a business that offers integrated construction solutions by incorporating 10 companies for the built environment to full turnkey projects, with an annual turnover in excess of over £180million.

Safety being at the heart of everything we undertake, our Plan Safe-Work Safe vision is critical. The JRL Group stretches from the depths to the heights of construction. Whether it be 60m below ground or 150m high into London's skyline, our group will deliver a complete construction service at the right time every time.

Incorporating ten key divisions, delivering projects large and small, from groundwork's to one off crane sales to full turnkey solutions, our clients benefit from wide-ranging expertise, a seamless service with added value.

The ethos of the company is to work closely with our clients building lasting, trusting relationships.



J. REDDINGTON

JRL
J. REDDINGTON

JRL
PLAN SAFE
WORK SAFE



Health & Safety

The health and well-being of our people and everyone that we work with is at the heart of all that we do.

That is why our vision of zero harm is realised by our Plan Safe, Work Safe programme.

Plan Safe, Work Safe means having competent people at every level, in control of what they do, and effectively communicating and co-operating with each other and with our clients.

We have a comprehensive management system for planning, implementing and monitoring all of our work activities to ensure that we maintain high standards. Every one of our managers and supervisors attends training workshops which ensure that they understand how to effectively manage safe operations.

We also have comprehensive training for our whole workforce across a very wide range of subjects.

Creativity is critical, including innovations such as Stairmaster, the staircase that allows safe installation and access, the Yellow Mat access system, and pre-cast and pre-fabricated sections for safe installation.

Above all, we work with our site teams and our clients to ensure that everyone goes home safe and well at the end of each working day.



OPERATIVES MUST READ AND SIGN THE RELEVANT METHOD STATEMENT BEFORE UNDERTAKING ANY OF THE FOLLOWING

Fixing Formwork to Soffits of Slabs, Girders and Ply Best Practice Guidelines

1. Mullergip MP, Crosshead 20-24 S and MKK Gates fixed to polished grid lines. (Ensure MKK Gate fixing wedge is always accessible from above with a hammer)
2. Primary GT24 Girders are fixed from the ground. Closest Mullergip MP of a pair is lowered before angling GT24 Girder into Crosshead of further Mullergip MP. GT24 Girder may now be placed into the Crosshead of the lowered Mullergip MP. Lowered Mullergip MP returned to required height.
3. Primary GT24 Girders installed to Part Specification.
4. Secondary GT24 Girders are installed to Part Specification from Youngmans fixed to the MKK Gates. Adjustable Safety Harness to be installed and used.
5. As Plywood Decking is positioned and fixed, Combisafe Steel Mesh Barriers must be fixed progressively. Where Combisafe Steel Mesh Barriers cannot be fixed, fixed Protection Barriers to be used temporarily.
6. Once the Plywood Decking area has been fully secured using the Combisafe Steel Mesh Barrier the Adjustable Safety Harness can be removed.
7. The slab can now be marked out and the reinforcement can be positioned ready for concrete pouring.
8. Once engineers have confirmed the slab strength, the Combisafe Barriers can be secured around the slab perimeter using Safety Post, Expanding Anchor Set.
9. The Mullergip MP are lowered by approximately 50mm.
10. Once the Mullergip MP have been lowered, the Secondary GT24 Girders can be rotated through 90° onto their side.
11. Plywood Decking can now be removed.
12. Secondary GT24 Girders are removed using Youngmans and Pop Up.
13. Primary GT24 Girders are removed using the reverse of the installation sequence.
14. Mullergip MP and MKK Gates are disassembled in reverse.

| MINIMUM SAFETY CONSIDERATION | | | |
|--|--|--|--|
| Warning Signage must be displayed to warn others who may be working in the area. | Access must be gained via a Safe Pile Ladder. Ladder must be a minimum of 1.5m or 5 rungs above landing point. | Crowd Barriers must display Warning Signage to highlight Loading Edge. | Crowd Barriers must be fixed to Deck and connected to an adjacent Barrier. |

OPERATIVES MUST READ AND SIGN TASK SHEET - FIXING FORMWORK TO SOFFITS OF SLABS - GIRDERS AND PLY BEFORE UNDERTAKING ANY OF THE FOLLOWING







J Reddington Ltd

Spearheading the JRL Group from the outset J Reddington Ltd have been an industry leading groundwork and concrete frame specialist for over two decades.

Building on a proven track record to date, the company is now increasingly being called upon to deliver solutions on larger projects in London and the South East which is providing the core to the business.

The ethos of the company is to work closely with our clients building lasting, trusting relationships. Our inherent understanding of the markets we serve, the expertise and the hands-on approach of our group directors, reinforced by a staff culture of safe working, collaboration and commitment, has made the JRL Group a market leader within its field.

Since its inception the business has continually focused on building and maintaining Customer relationships through effective delivery, minimising costs and exceeding programme expectations.





CASE STUDIES



Prescott Street Ground Works, London

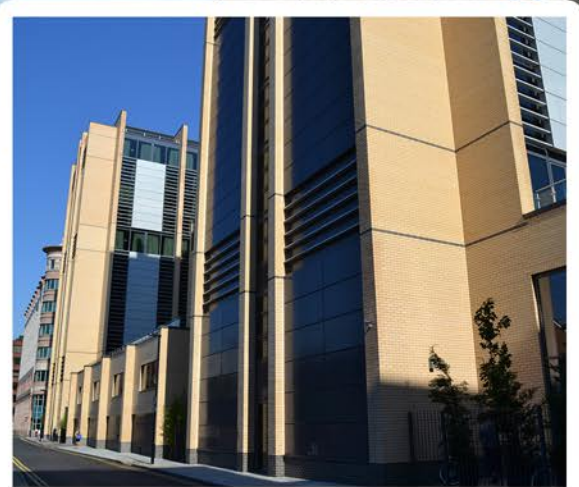
Client: Grange Hotels
Value: £15.0million

This project involved the construction of over 372 luxury hotel rooms demarked by concrete cross-walls and the installation of prefabricated bathroom pods across three blocks with a triple level basement which housed all the necessary plant to service the hotel as well as a health spa and entertainment areas.

A perimeter Secant wall was installed to support the bulk excavation to allow the construction of the triple level basement, along with a pioneering temporary works solution which free spanned the basement box during excavation. In total 798 piles were installed during the works, 498 of which were in the secant wall.

Extensive archaeological exploration was undertaken on the project over a six month duration. All of which were effectively sequenced and planned to allow for the bearing pile installation to be carried out alongside the archaeological working zones without causing any disruptions.

In total 17,500m³ of material were carted off site, 15,000m³ of concrete placed and 2350Tn of steel fixed during the works.





Dickens Yard, London

Ealing, W5 2UQ

Client: St George West London
Value: £39.0million

An ongoing Design and Build Contract for the delivery of the extensive double basement and Shell and Core works for Blocks A & B at the Dickens Yard redevelopment in Ealing, London.

The two blocks linked in a H-shape on top of a retail space at ground floor and a podium on 1st floor rise to 9-stories of Private and HA residential apartment accommodation.

The concrete structure is to be clad in re-constituted concrete cladding with extensive window and balcony works.

The works commenced on site in August 2010 with staged apartment, and residential handovers throughout 2012.

The works also included an extensive Sales and Marketing Suite building for the development.





Great Western Quarter

Brentwood, TW8 0QY

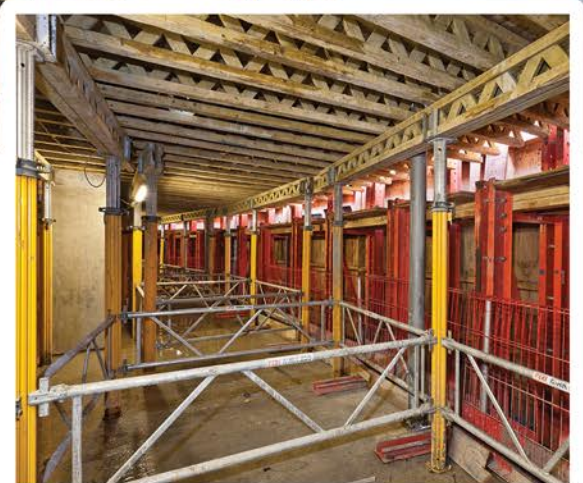
Client: Barratt Homes
Value: £19.0million

GWQ, Great West Quarter, is the past, present & future as one. A fusion of temporal elements & architectural styles, it's an urban regeneration on a truly grand scale.

Located in the heart of the huge regeneration in west London, this new development consists of more than 800 homes. Amongst these will be large green open spaces and landscaped piazza, the location for an array of shops, offices, cafes and restaurants.

The Skylon tower is a 25 storey skyscraper including both an 80 room hotel and an 80 bed aparthotel which is set to dominate the west London skyline. It will be formed using a complex rail self climbing jump form system, hydraulically jacked to form each floor level.

The floor slabs surrounding the main core consist of post tensioned bonded slabs which have been produced under a design and build contract taken on by JRL.





Imperial Wharf, London

Chelsea Creek, SW6 2FS

Client: St George
Value: £50.0million

As London's premier riverside residential development, set in its own riverside park on one of the most sought after stretches of the Thames, Imperial Wharf brings a vivid and eagerly awaited addition to the London skyline.

Direct river views over landscaped parkland and courtyards towards the River Thames.

One of our landmark urban regeneration projects, Imperial Wharf reclaimed the site of a former gasworks and turned it into a mixed-use development, comprising high-specification private apartments, social housing and shopping mall.

This was a major shell and core project for J Reddington Group and we took full design and construction responsibility for the structure, the external envelope and core area fit-out of all of the buildings. We also used our expertise in land remediation to prepare the site prior to the groundwork.

Awards: UK Property Awards 2006: Best Development in London.
Gold Award 2009: Considerate Contractors Scheme





Bezier Building

Old Street, EC1Y 1AF

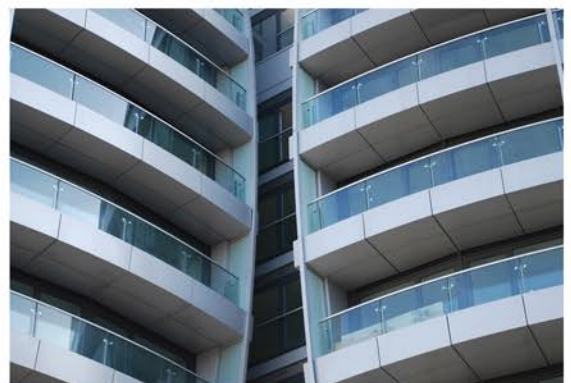
Client: Tudorvale Properties
Value: £10.6million

Two curvaceous residential towers are part of the Bezier development on the southeast corner of Old Street roundabout. One block will be 14 storeys high, the other 16. Between them they will contain 155 homes, from studio flats and two-bedroom flats to penthouses with roof gardens, as well as shops on the ground floor, once completed in 2010.

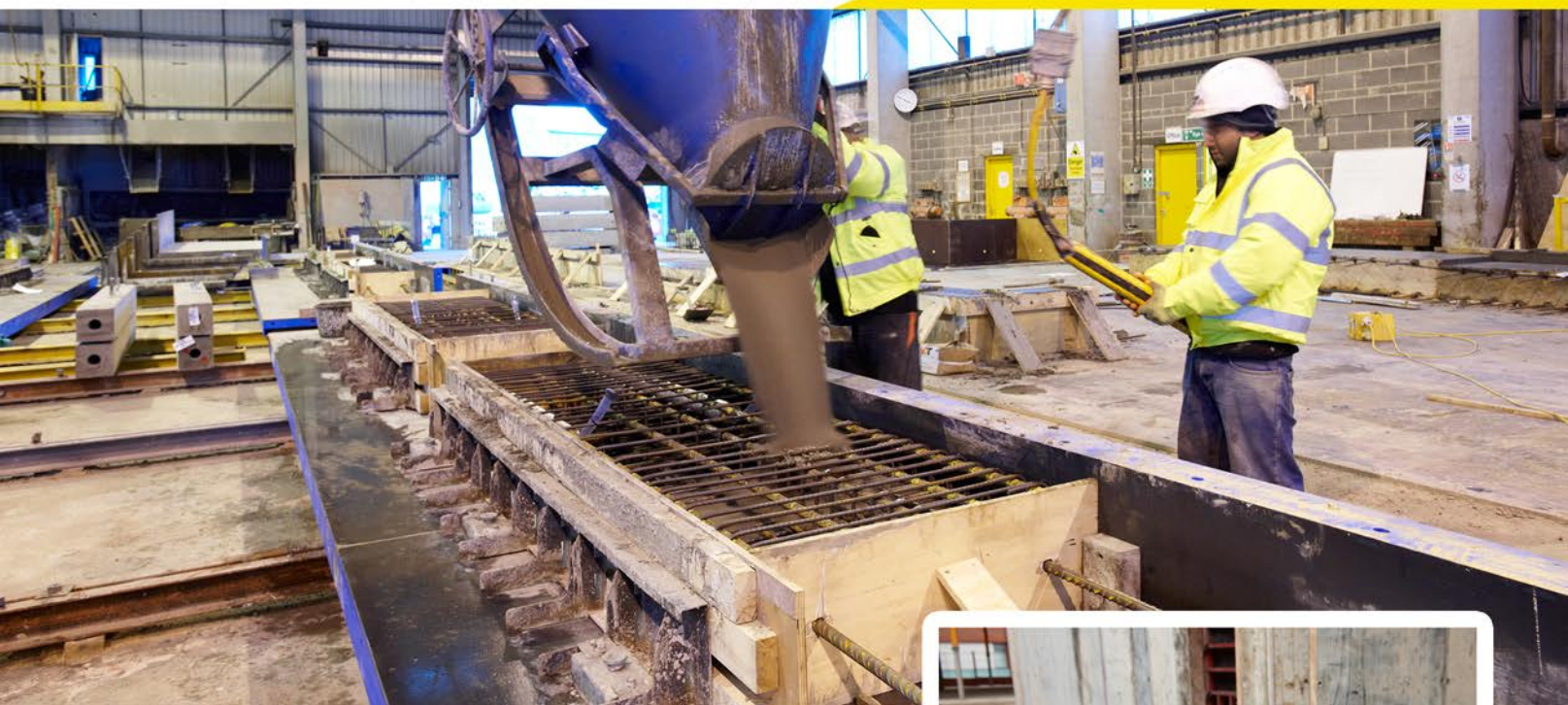
The towers back on to the Central Foundation Boys' School, a trust-funded secondary school. In a deal with the developer, Tudorvale, the school sold the land in return for the building of a new sports pitch with a retractable roof.

Two wind turbines, one on the roof of each tower, will provide 2 per cent of the energy used by the homes; another 10 per cent of renewable energy will be produced on-site through bio-mass boilers that use wood pellets.

A perimeter 'contig' wall was installed to support the bulk excavation to allow the basement construction. In total 349 piles were installed during the works, 20 of which were between 1200mm to 1800 in diameter and reached depths up to 40 metres.







Trent Precast Ltd

Trent Precast Ltd is a concrete precast fabricating factory based in Nottingham. Our state-of-the-art factory is a purpose built facility that provides precast across the group.

We work extremely close with our partners across the JRL Group, providing design solutions and a range of products including vertical columns; individually-designed panels; lift shafts and general cladding installed in projects ranging from premium-niche residential to commercial premises and student accommodation.

Operatives are trained to the highest standards and their focus on the performance of the finished product ensures that carbon emissions are reduced while onsite waste is kept to an absolute minimum.

Safety is vital and we take pride in all our projects with our Combisafe edge protection and a range of fall protection measure pre-installed, the Trent Precast Concrete product range offers enhanced capability in the critical area of site safety.







Miller Piling

A specialist geotechnical contractor who combines industry-leading equipment and technology for the design and construction of piled foundations and embedded retaining walls. Since its inception in 2005 the company has grown to become one of the industry's leading installers of Continuous Flight Auger (CFA) and Rotary Bored piles within the UK working closely with network rail and London Underground.

To maximize our clients specifications we retain a versatile fleet of CFA, Cased CFA and Rotary rigs capable of installing piles from 300mm to 2400mm up to 70m deep. This coupled with our in-house design capability means we can offer detailed and viable value engineered proposals.

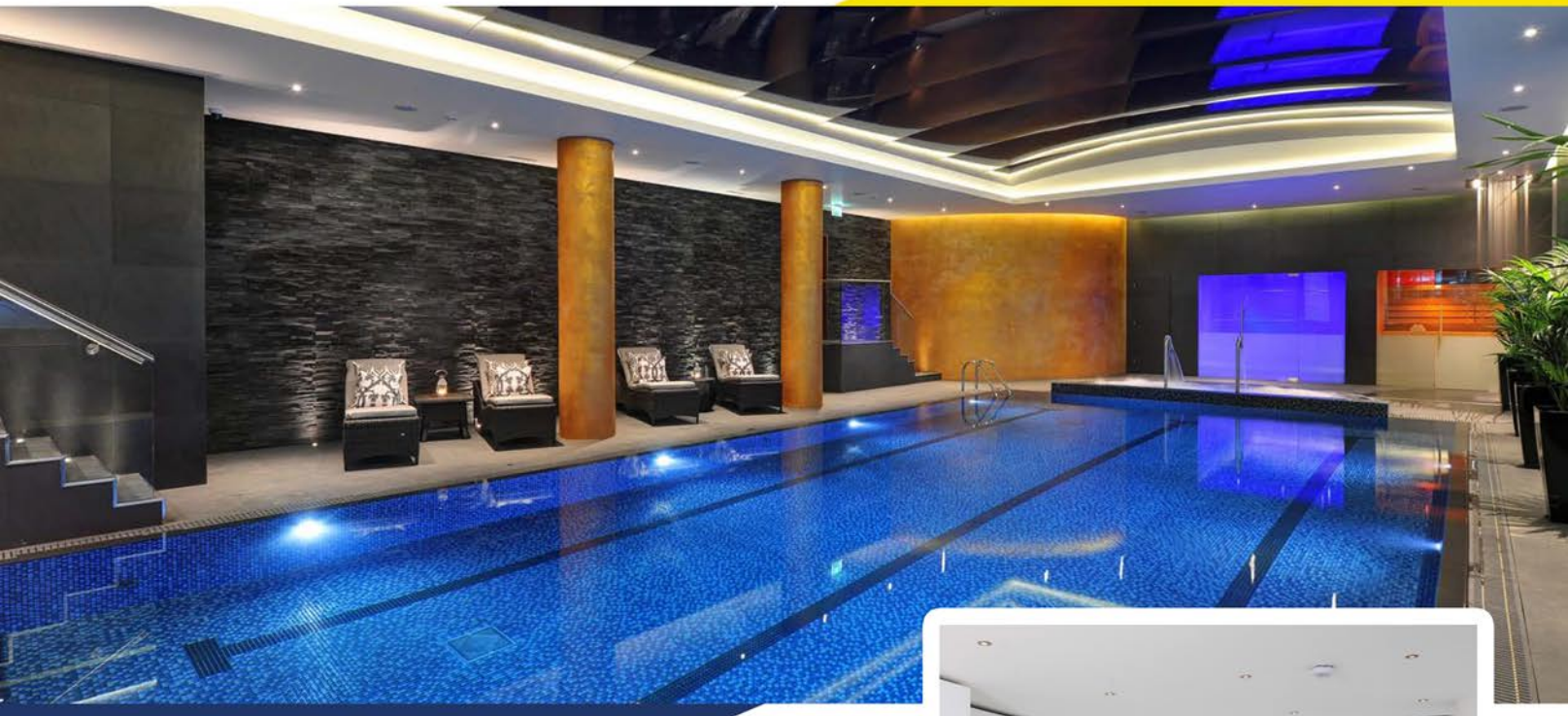
Furthermore our competences go beyond piling and, unlike many traditional contractors, we operate our own ancillary plant to facilitate our works and all aspects of sub-structure construction which include installation of Working Platforms, Pile Caps, Capping Beams and Bulk Excavations.

Some of our piling services include:

- Rotary Piling
- CFA Piling (Continuous Flight Auger)
- Piled Walls
- Cased CFA







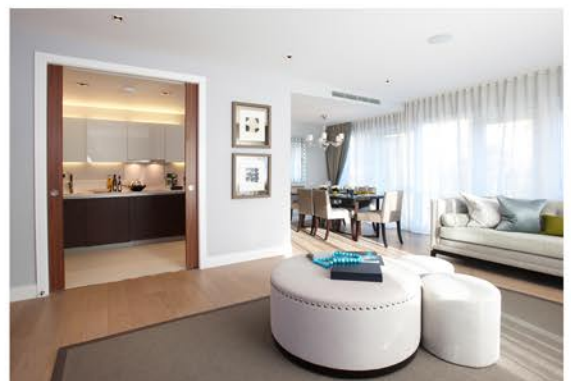
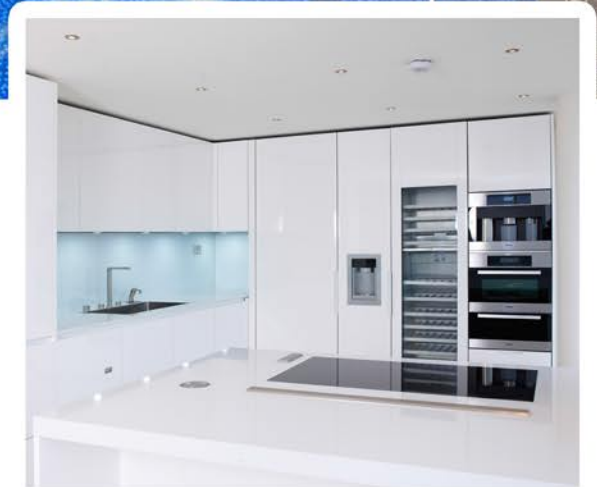
Midgard Ltd

Midgard is the main contracting division of the JRL Group and utilises all the company's in-house resources and facilities to provide clients with a bespoke construction service.

We have gone back to the time when contractors carried out work themselves with a dedicated, reliable workforce and their own fleet of plant and equipment. Our work is carried out in-house for the following disciplines: piling, reinforced structure, pre-cast elements, facades and glazing, M and E, dry-lining, craneage and scaffolding.

This gives us direct contact with specialist expertise all under one roof rather than through a remote supply chain of suppliers and sub-contractors who have their own agendas and interests to protect. We are happy to provide our clients with a tailor-made service whether this be piling only or full turnkey construction.

We have a broad range of construction experience and expertise in commercial and residential developments in particular but where we can offer our clients truly exceptional performance in high-rise construction where the Group's skills are particularly suited.





JRL
UK FACADES LTD

GROSVENOR
WATERSIDE
RESIDENTIAL DEVELOPMENT



UK Facades Ltd

UK Facades offer a complete façade solution, from design to completion, we take an inherent pride in your project, striving for a unique standard of excellence throughout.

The Company was formally launched in January 2011, but was already in existence within the group undertaking façade works to J.Reddington and Midgard projects. It has grown steadily and completed seven jobs in 2012 through from design to completion with a turnover in excess of £10million.

We can accommodate any desired finish, specialising in various rainscreen options such as; Insulated Render Systems, Zinc, Terracotta, Stone, Brick etc.

We pride ourselves on our attention to detail, always placing emphasis on a quality finish. UKF provide a "Total Solution" on frame construction. By constructing pre-panelised frames at our Trent facility in Nottingham, combined with the benefit of pre-cast concrete frame units, we can deliver obvious improvement on our clients construction programmes.



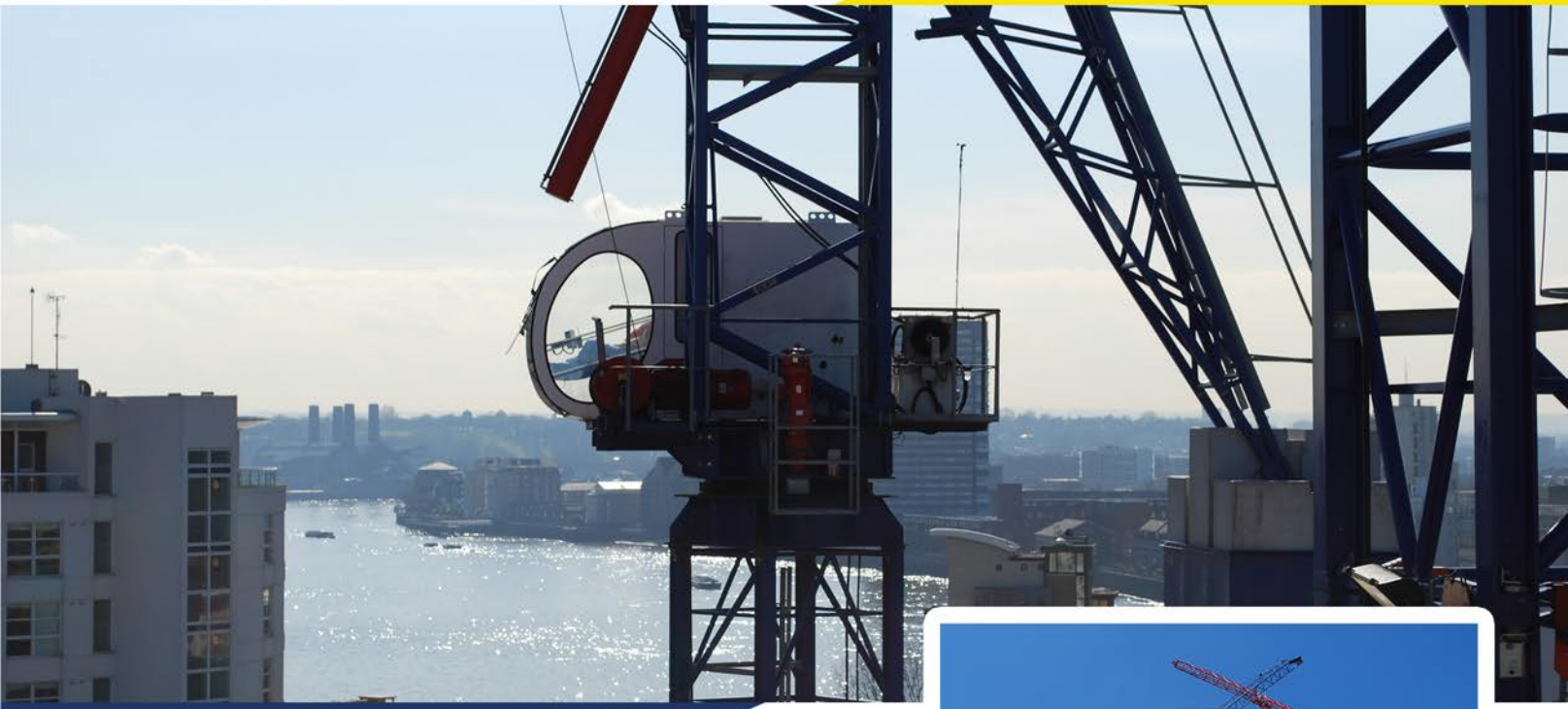


JRL
LTC TOWER CRANE
HIRE AND SALES
0208 327 4060

London Tower Crane
Hire & Sales Limited
020 8327 4060

JOST

JRL
LONDON TOWER CRANES



London Tower Cranes

Established in 2003, London Tower Cranes Hire & Sales Limited (LTC) offers craneage solutions to meet a wide range of demands, including sites with restricted access.

Our comprehensive service runs from initial consultation through to dismantling, and encompasses all aspects of crane management advice and site visits to determine exactly which cranes will best suit our clients' requirements.

We are proud of our record as the largest independent tower crane hire provider in the UK – testament to our first class reputation built up over a decade of high performance and consistent delivery.

- Over 200 cranes
- Encompass all aspects of crane management
- Crane supply with or without operators
- CAD design process
- All our operators are compliant with cpcs
- Experienced base design and installation
- Power solutions available
- Staff based nationwide
- Cranes customised to clients colours
- Operator rescue equipment
- Experience of climbing cranes
- ISO9001 compliant
- Experience of complex installation
- Anti-collision systems





SERVICES



Thames Reinforcements Ltd

Thames Reinforcements Ltd is based in Sheerness, Kent. Our state-of-the-art factory is a purpose built rebar plant with a production capacity of 1500 tonnes of CARES approved cut & bent reinforcement every week.

Our Sales and Production team has a wealth of experience and are dedicated to giving each and every order received 100% of their attention no matter how small or large.

Cut and Bent Rebar of 8mm to 50mm

CARES Approved cut & bent reinforcement to BS 8666 and BS 4466.

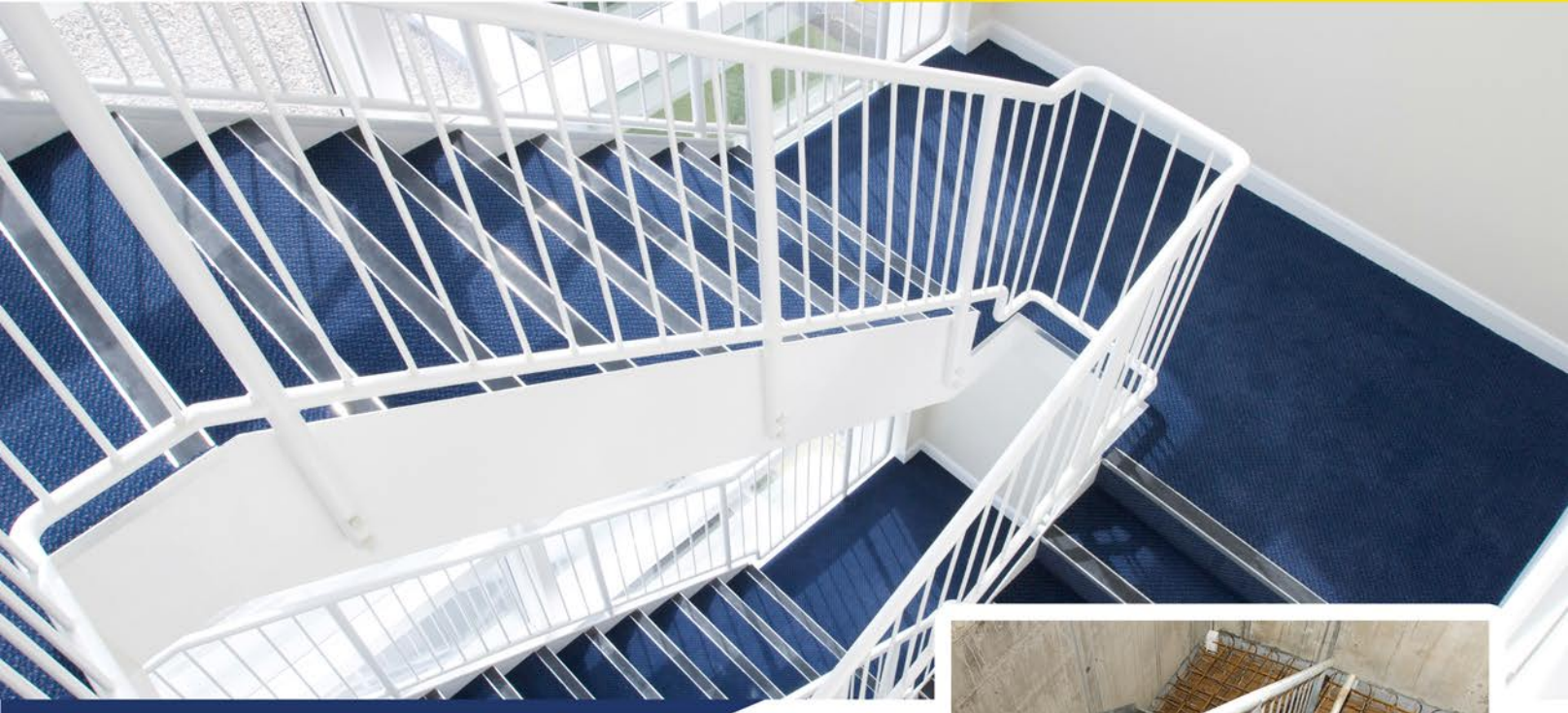
Value Engineering

With in-house resources and early involvement in projects we can offer a full design service.

Express Delivery

We offer an Express Service for Cut & Bent Reinforcements as well as Prefabrication. We have a range of Artic Flatbeds, Rigids and Hiabs available for national delivery.





Stair Master Ltd

Stair Master supply a lightweight mould (permanent formwork) that can be quickly and easily used to construct a finished concrete stair on site.

Our formwork already has a layer of steel reinforcement in the base and remains in place after the concrete has been poured. It is made of durable galvanized steel which protects the stair from damage and gives a good finish.

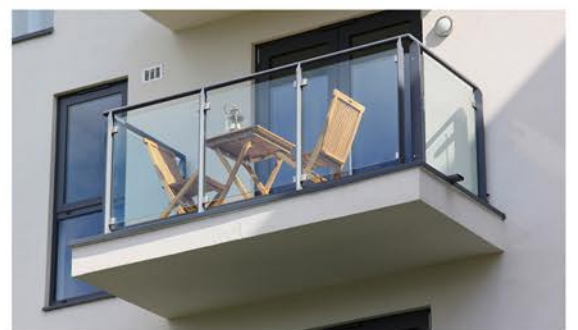
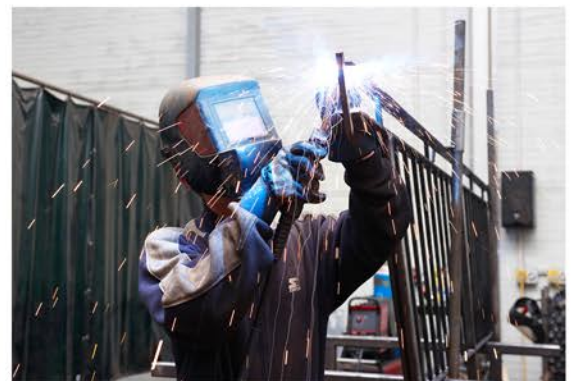
Above all, Our vision is to complete contracts Safely, to the highest possible Quality, on Time and within Budget. This vision is dependent, above all, on planning. Put simply our belief is that any operation that is planned correctly will be accomplished safely. This goal forms part of our Health and Safety initiative.

Stairmaster are also able to now provide, Balcony Balustrades in Stainless Steel, Galvanised & Powdercoated or Structural Glass to all our customers.

List of products we provide:

- Stairs
- Handrails
- Balconies
- Brise Soleil
- Gates & Rails
- Hoarding

As well as Stairs, Handrails & the new products above. We can fabricate just about any architectural metalwork product that meets our clients needs.





Yellow Mat

The Yellow Mat walkway matting is a simple solution to an ongoing predicament in the construction industry, "how do you maintain and keep clear the designated walkways at all times"?

Yellow Mat does this by merely being a brightly coloured anti-slip walk way mat that all personnel automatically identify as an access and egress route to their place of work. Yellow Mat is flexible and easy to roll up and store when not in use.



Durability

High Quality Rubber.

The high quality rubber is infused with a yellow pigment at production stage, giving a lasting colour and prevents fading by exposure to sun and usage.

The strong, ridged rubber is durable and hard wearing, easy to clean and maintain, the mats can be efficiently rolled up and transported for reuse.



Health and Safety

High Grip Surface

Yellow Mat is an essential product for all construction sites. Its wide ridge pattern gives the rubber mat a non-slip and high grip surface. Each roll comes in a standard 10 metres x 1 metre x 3 millimetres thick. The 3mm depth is the key to the flexibility in the mat while remaining light weight.

High Visibility

High visibility yellow stands out in contrast from its surrounding and provides a clear and safe walk way. It also prevents operators unloading onto a designated walkway as the Yellow Mat is easily visible from a height.

Prevent Trip Hazards

Due to the nature of the materials used in the production of Yellow Mat, trailing leads can be easily covered, thus, eliminating the risk of accidents.



London Concrete Pumping Ltd

We operate a large fleet of pumps and specialist equipment providing onsite services for a range of clients operating in the residential, commercial and hotel sectors.

24 Hour Service

In a fast-moving, 24-hour commercial landscape we realise it is vital to operate without time limits. The business can respond to any requirements outside normal working hours – often the only option in a prestigious commercial environment such as the City of London.

We work closely with our clients to assess their needs and welcome the opportunity to pre-plan site issues to ensure smooth, on time delivery every time.

Our Services include:

- Large fleet of pumps
- Pumps to suit all types of site environment
- 5 London depots
- 24 hour operation without time limits
- On time delivery
- Experienced operators
- Safety and Sustainability is our priority

We have a variety of pumps to suit our clients needs consisting of:

- Mobile Concrete Pumps
- Trailer Pumps
- Placing Boom
- Spider Boom





4 Elstree Way, Borehamwood, Hertfordshire, London WD6 1RN
Tel: +44 (0) 208 953 7800 | email: info@jrlgroup.co.uk
web: www.jrlgroup.co.uk